

Accessibility Guide for Zennor Cottage

epoates@aol.com, 01736 711452 / 07977 448113, www.zennorcottage.co.uk

Contact for accessibility enquiries: Ed Oates



Welcome

4 Star self-catering accommodation for up to 4.

Located in the heart of picturesque Marazion, Zennor Cottage is a short walk (400m) to the Town Beach and the causeway to St Michael's Mount. The sandy beach and many cafes, restaurants and shops makes this a great place for family holidays.

The Cornish Coastal Path runs through Marazion offering great walks and spectacular views, and the Pilgrims Way goes in-land through lovely rural Cornwall. The RSPB Bird Sanctuary at Marazion Marshes is close by.

At a Glance

Level Access

- The main entrance has 1 step. There is no lift and no ramp.

Access with steps

- There are steps from the main entrance to:
 - Lounge
 - Dining Area
 - Entrance pathway from the street

Bedrooms

- We have non-allergic bedding.

Level access bedrooms

- The route to the bedroom is 750mm wide, or more.
- There is unobstructed floor space 1200mm by 900mm, or more.

Hearing

- Some (bedroom) TVs have subtitles.
- Some staff have Next Generation Text and disability awareness training.

Visual

- Some parts of the venue have low lighting.

General

- Some staff have disability awareness training.

Getting here

Zennor Cottage
Beacon Road
MARAZION
Cornwall. TR17 0HF

Travel by public transport

- You can get to Zennor Cottage by bus and train.
- Market Square, Marazion (coming from Penzance or going to Helston) and Godolphin Arms, Marazion (coming from Helston or going to Penzance). These stops are approximately 150m from Zennor Cottage. The bus stop is 0.10 miles / 241.5 km from Zennor Cottage.
- The nearest train station is Penzance. The train station is 3 miles / 4.8 km from Zennor Cottage.
- You can get a taxi with A2B Taxis by calling 01736 330864.
- You can get a taxi with Nippy Cabs by calling 01736 366666.
- You can get a taxi with R-Cars by calling 01736 330564.

Parking

- We have a car park. The parking is less than 50 metres from the main entrance. Parking is free.
- There is a drop-off point at the main entrance. The drop-off point does not have a dropped kerb.
- From the parking to the main entrance, there are 3 steps. There is no ramp and no lift.
- Parking —A garage next to Zennor Cottage is included, but is only large enough for medium size cars (garage internal dimensions: Door Width 2.1m, Internal Width 2.5m, Height 1.8m, Length 4.5m for example a Volvo S40 or an Audi A4 will fit ok). Parking for large 4×4 and large estate cars is available in the public car parks next to the beach. Extra parking space in the public car park is approximately £35 per week.



Narrow lane up to Zennor Cottage

Arrival

Path to main entrance

- From the street to the main entrance, there are 3 steps. There is no ramp and no lift.

Main entrance

- The main door is side hung and manual.
- The door is 750mm wide.
- The main entrance has 1 step up.

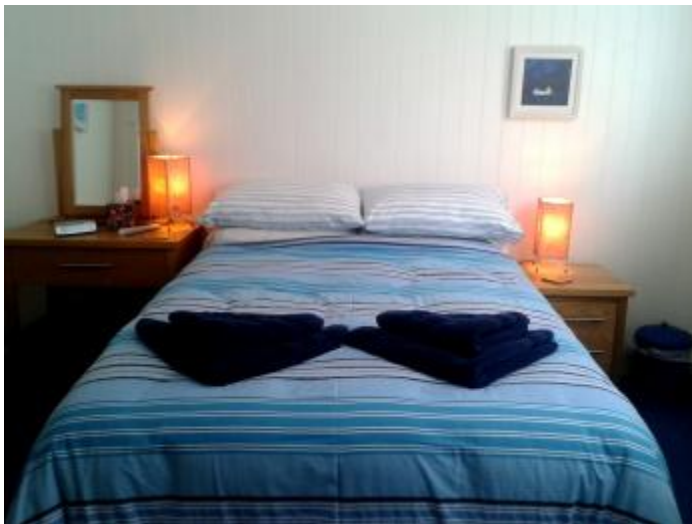


Entrance off the street, through the gate then 3 steps down.

Getting around inside

Visual Impairment - General Information

- Some parts of the venue have low lighting.

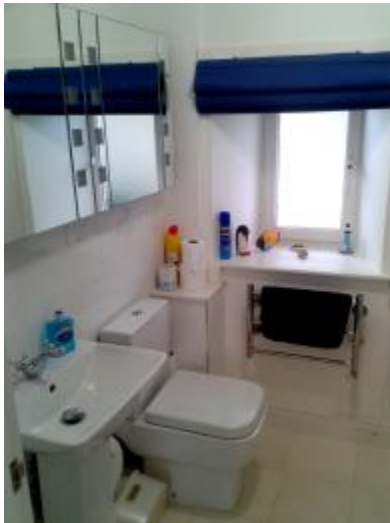


Double Bedroom

Bedrooms

- All bedrooms have windows.
- Bedrooms have ceiling lights and bedside lamps.
- Lights are halogen and LED. Some TVs have subtitles.
- All bedrooms are non-smoking.
- We have non-allergic bedding.
- All bedrooms have fitted carpets.

- We can move the bedroom furniture, to improve accessibility.



Bathroom

Self catering kitchen

Kitchen

- We have an open plan kitchen.
- From the main entrance to the kitchen, there are 13 steps. There is no lift and no ramp.
- The work surface is available at a height between 650mm and 900mm.
- The hob is available at a height between 650mm and 900mm.
- The sink is available at a height between 650mm and 900mm.
- The oven is available at a height between 650mm and 900mm.



Kitchen area

Lounge

Lounge

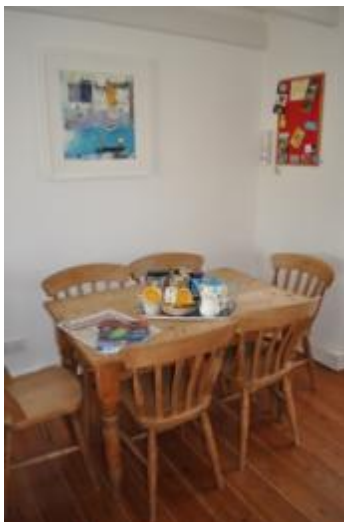
- From the main entrance to the lounge, there are 13 steps. There is no lift and no ramp.



Living Room

Dining Area

- From the main entrance to this area, there are 13 steps. There is no lift and no ramp.



Dining area

Getting around outside

Entrance pathway from the street

- From the main entrance to the area, there are 3 steps. There is no lift and no ramp.



Entrance pathway from the street

Customer care support

Accessibility equipment

- Opposite Zennor Cottage is the Marazion Memorial Gardens. Please bring a poop-bag and use the bin by the entrance to the gardens.
- You can hire mobility equipment from H.S.C Mobility by calling 01736 755927.

Customer care support

- Some staff have disability awareness training.
- Some staff have Next Generation Text training.